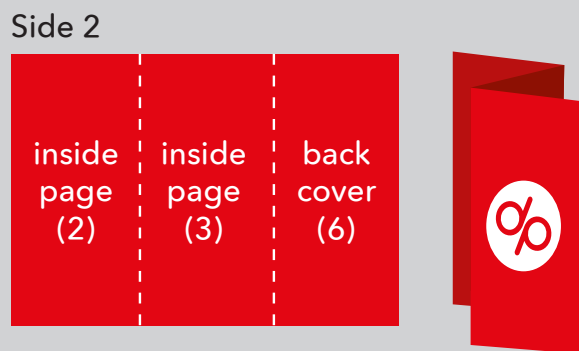
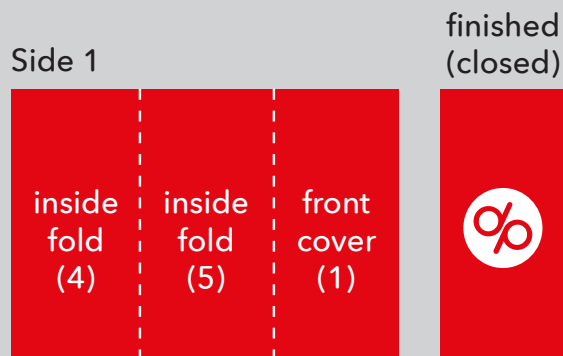


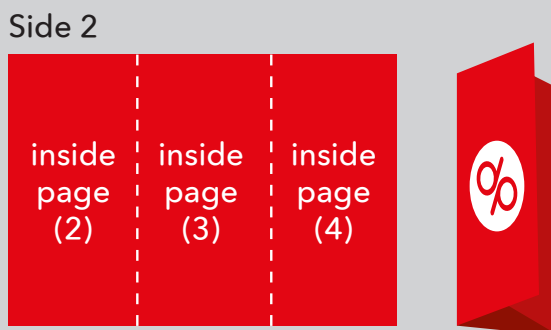
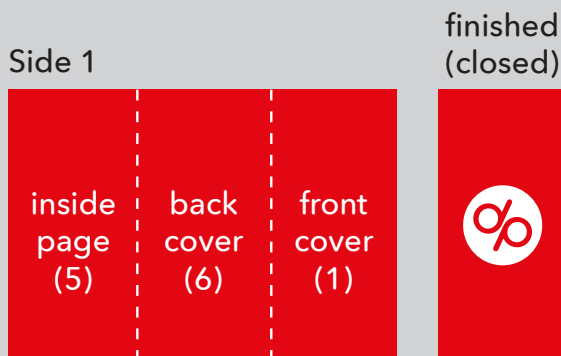
# Folding Guide

a brief guide to the different types of folds we offer

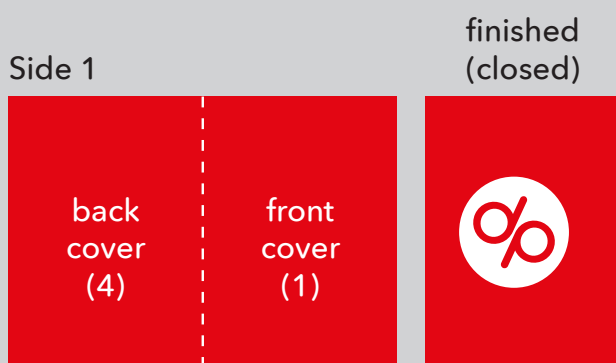
## Z-Fold



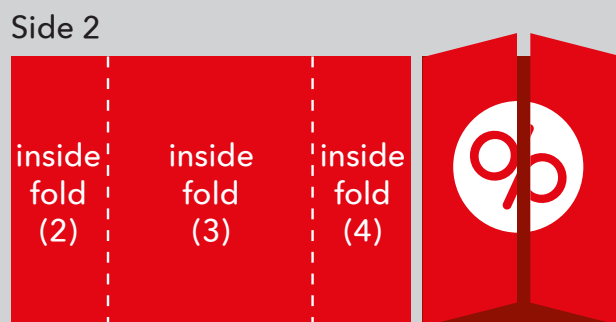
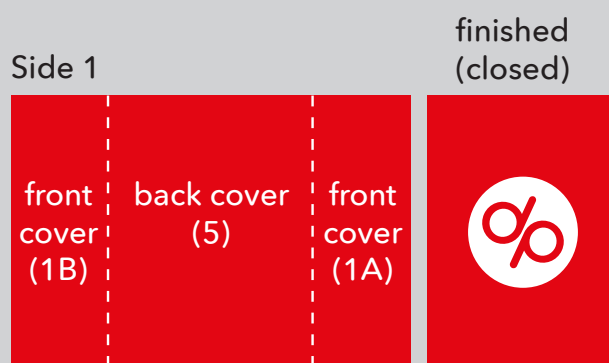
## Roll Fold



## Half Fold



## Gate Fold

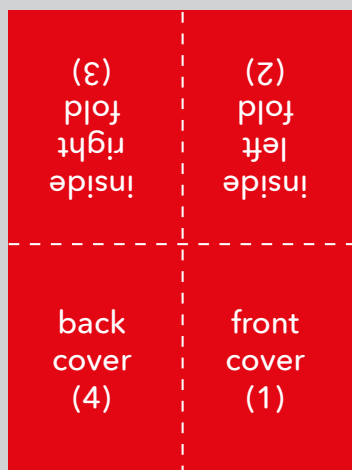


# Folding Guide

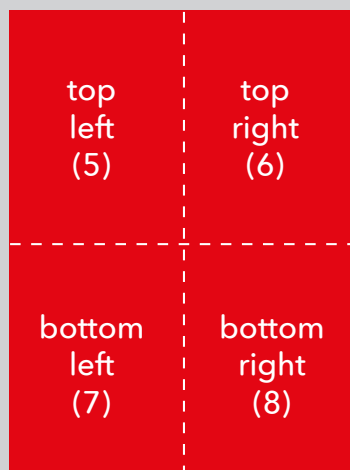
a brief guide to the different types of folds we offer

## Cross Fold- Portrait

Side 1



Side 2



finished (closed) A5



### Bleed (5mm)

The bleed area extends 5mm beyond the edge of your finished document. Colours and images must extend beyond the edge of the document to prevent unwanted white borders around the edge of your finished document. Note that this 'bleed' will be trimmed during the finishing process so ensure that no important details are set up to print in this area.



### Safe Area (5mm)

It is recommended that your artwork is at least 5mm from the edge of the page if it is not meant to bleed off. Printed borders placed too close to the edge of a page may look uneven when the job is trimmed.

## Need more help?

We have a range of templates for you to choose from!  
You can find them at the bottom of each product page.